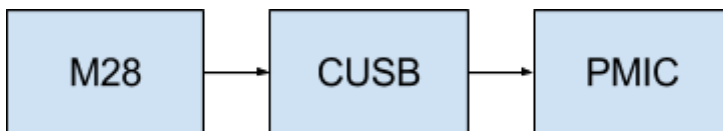




RbConfig M28 installation note v2.0

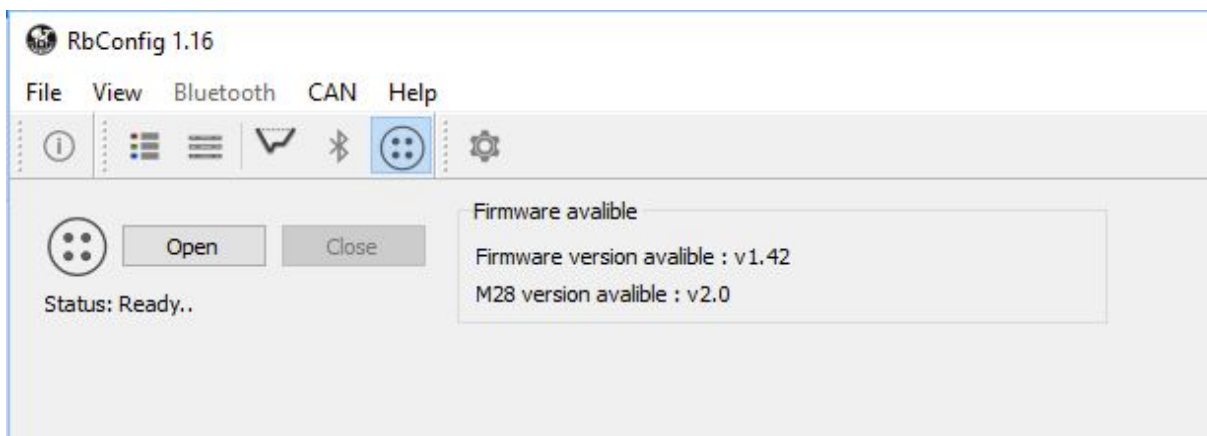
2017-05-29

Here is a short installation note when updating the M28 unit with RbConfig software. Please follow the instructions and make each step as described.



The update order.

- Download RbConfig from <http://rb.poseidon.com> and install onto your PC or Mac computer.



- Start RbConfig, wait until the firmware file is download "Download" folder and the new firmware is visible in the "Firmware available" part of the view.



- On your computer, open WIFI connection tool and find the M28-xxx, where xxx is the serial number of your M28 unit. If requested for wifi password, use "matterhorn".
- Check that the connection has been established.



[Home](#) | [DiveLog](#) | [RedboxLog](#) | [Picture](#) | [ScreenDump](#) | [Firmware](#) | [System](#)

M28-102 : Firmware

Select a new firmware of type ".posm", download and when completed, reboot. At reboot time, which may take some time, the system will be updated. After it is done, it will reboot to use the new firmware.

Select firmware image to upload (upload will take some time):

No file chosen

[Poseidon webpage](#) | [Rebreather webpage](#) | [Support email](#)

- Open web browser and used the URL "<http://192.168.7.1>" and select firmware page
- Click on "Choose file" and select the firmware file from Download folder that the RbConfig tool downloaded, and should be named "Downloads/fw-v2.0-m28v1-20170529_115944.posm"
- Click on "Upload firmware file" and wait until the file is uploaded to the M28 unit.



M28-102 : System

SN	M28-102
Unit time in UTC	2017-05-29 13:05:44
Sys version	HOSTNAME=m28v1_dive BUILD_DATE=2017-05-26 16:07:30 BR_TAG=v1.9.9 BR=2016.08.1
FW version	DATE=2017-05-26 VERSION=2.18.01 VER_HEX=0x021801 INFO: Release version.
UUID	50FF6A06-50674857-47540187-00000000
Manufacturer date	2016-07-12 13:02:11
STM FW version	2B0F0142
STM BL version	2B0F1600
PCB version	2B0F0300

Power off

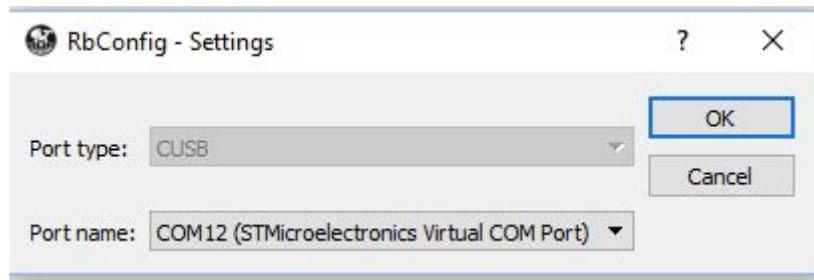
Reboot

Reboot to update

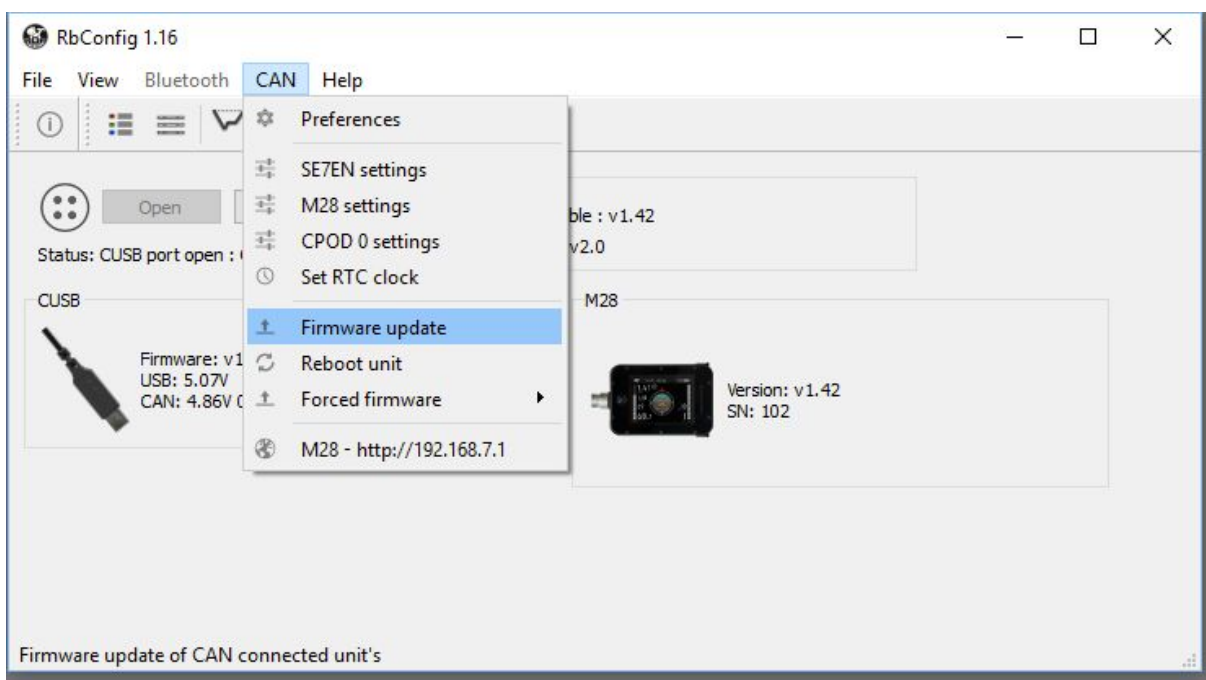
- Select “System” page and click on “Reboot” of the M28 unit
- The M28 will restart and perform a firmware update. Wait until it is done. The M28 will restart two times. Wait until back on the new firmware view.



- Use the M28 unit to update the CUSB cable. Goto Apps/Dive view. Then select “Firmware update” in the list”.



- Connect the CUSB to the computer USB port, and the other end to the M28.
- Select CAN mode.
- Open settings view and select the serial port of the CUSB. Please follow the instructions below.



- Now use the RbConfig to update the PMIC of the M28 unit by issuing “CAN/firmware update”. This will make the M28 to stop with RED LED and after a complete update start up again.
- Now the system is up to date.
- If other devices is connected to the CAN bus, it can be updated ether with the M28 unit, or using the RbConfig with the CUSB cable.